

Protocols of the induction in Buffalo Species

Ovsynch

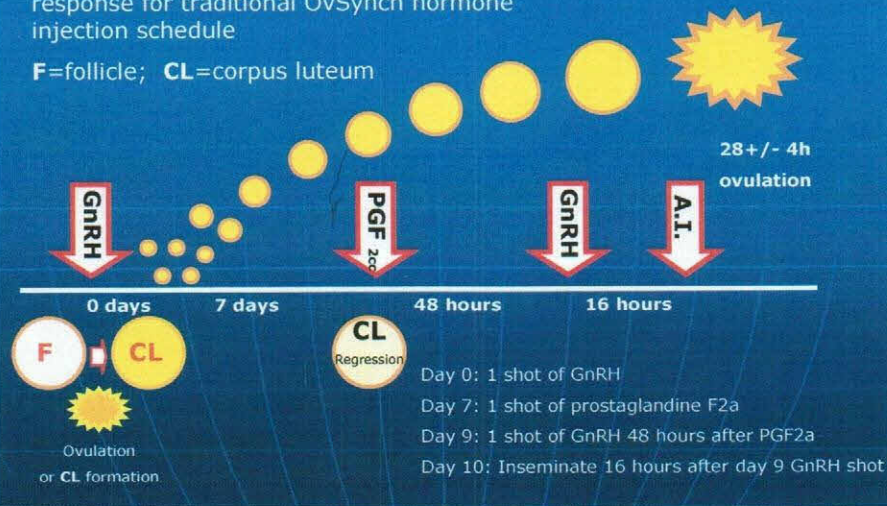
Prosynch

Resynch

Ovsynch protocol in buffalo

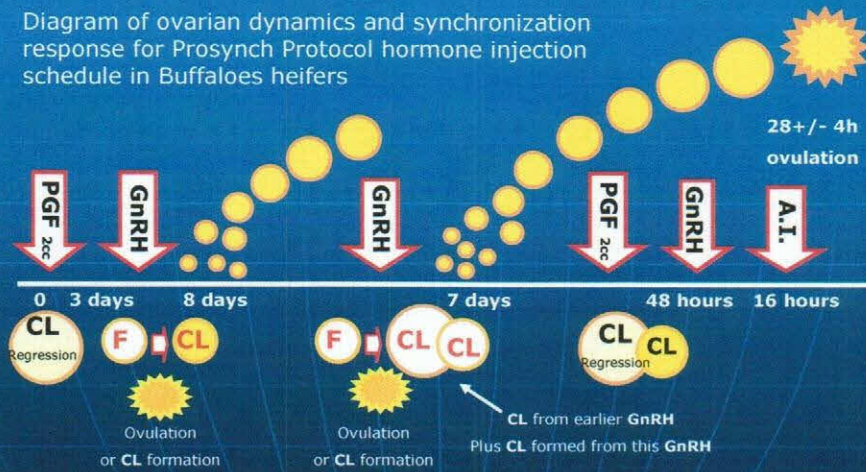
Diagram of ovarian dynamics and synchronization response for traditional OvSynch hormone injection schedule

F=follicle; CL=corpus luteum



Prosynch Protocol in Buffalo Heifers

Diagram of ovarian dynamics and synchronization response for Prosynch Protocol hormone injection schedule in Buffaloes heifers



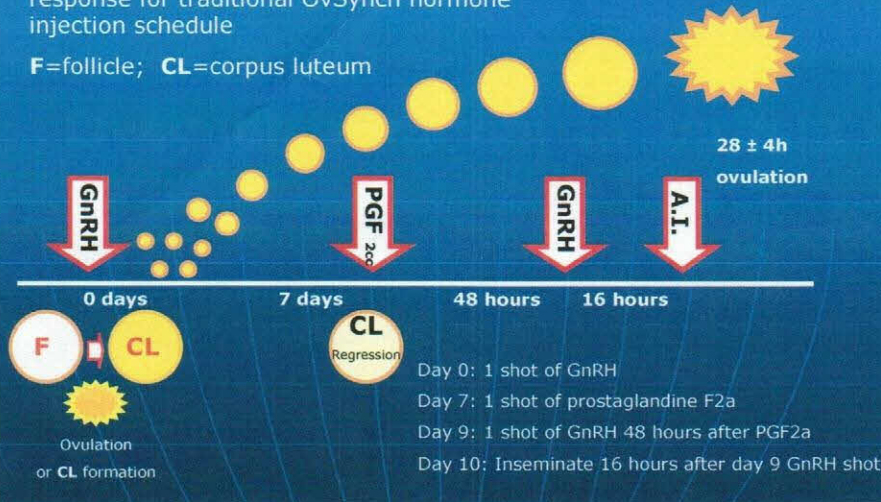
Resynch Protocol in Buffalo



Ovsynch protocol in buffalo

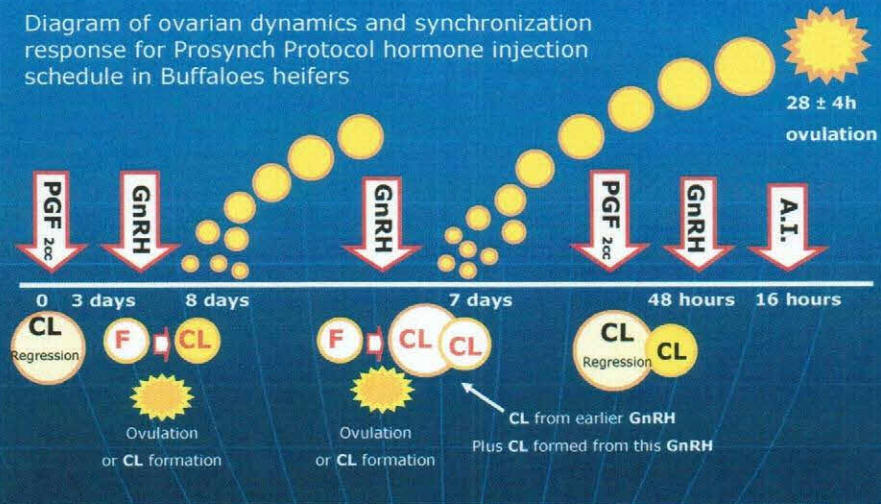
Diagram of ovarian dynamics and synchronization response for traditional OvSynch hormone injection schedule

F=follicle; CL=corpus luteum



Prosynch Protocol in Buffalo Heifers

Diagram of ovarian dynamics and synchronization response for Prosynch Protocol hormone injection schedule in Buffaloes heifers

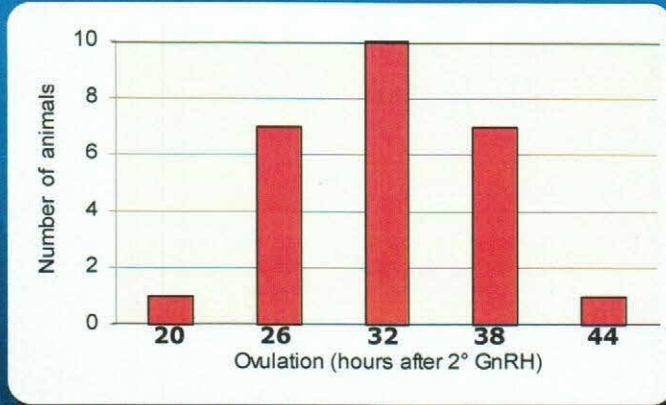


SUGGESTIONS

1. Buffalos should be in good Body condition
2. Follow exactly the protocol for A.I in Buffalo specie
3. Utilyze medecine indicated
4. Inseminate with semen of excelent quality
5. Excelent general management

Ovulation Distribution

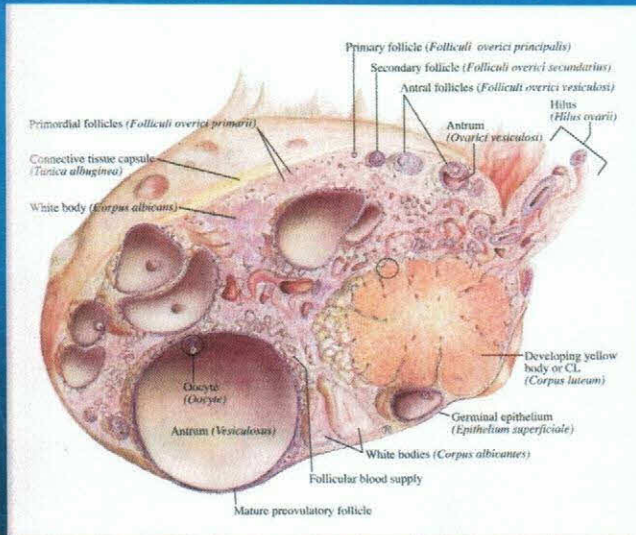
Distribution of the ovulations after the second GnRH injection (mean of 32,0 5,7 h), in female buffaloes treated with the protocol of synchronization of ovulation with GnRH/PGF2a/GnRH.



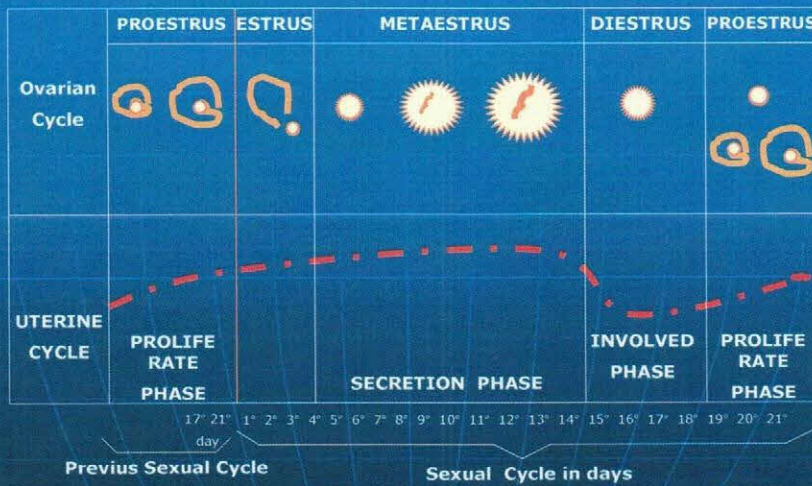
Resynch Protocol in Buffalo



Ovary (Ovarium)



Estrual Cycle



Avoiding excess loss of body condition improves fertility in early lactation

Insemination done while the cow is:	Conception rate
Losing body condition score	44%
Less than 1 unit	50 %
From 1 to 2 units	34 %
More than 2 units	21 %
Gaining body condition score	67%

Ovary (Ovarium)

